

# PIXMA iP1600 and iP2200 Bubble Jet Printers

**Canon**  
advanced simplicity®



**Fast, easy and affordable.  
Quality photos and documents at home.**



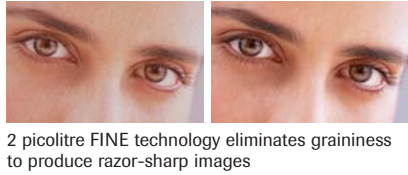
## **PIXMA – HOME PHOTOS HAVE NEVER BEEN THIS REAL**

PIXMA is the direct result of Canon's expertise in print-head technology, photography and copying. Canon's new PIXMA range features FINE print-head technology which places microscopic ink droplets on the page with unparalleled accuracy and consistency. PIXMA delivers superior quality to your photographic and document printing with unsurpassed speed and reliability.



## PHOTO AND DOCUMENT PRINTING WITH EASE

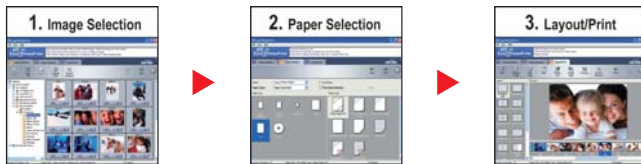
- 2 picolitre FINE technology results in sharper text and enhanced image detail.
- Produce high-quality photos and documents at up to 4800 x 1200 dpi!
- Enjoy true borderless photo printing at home – up to A4 size.
- Print a true-to-life, borderless 6" x 4" photo in approximately 70 seconds with the iP1600 or as fast as 55 seconds with the iP2200?
- The compact design of the printers allows them to fit conveniently into tight spaces.



2 picolitre FINE technology eliminates graininess to produce razor-sharp images

## BE CREATIVE WITH EASY-TO-USE SOFTWARE

- Easy-PhotoPrint** is a user friendly application for printing out digital photos, retouching portraits and lab-quality trimming.



- Easy-WebPrint\*** eliminates waste and frustration by automatically adjusting the size of a web page to ensure it fits on the sheet perfectly when you print.<sup>3</sup>
- PhotoRecord\*** lets you create beautiful photo albums with imaginative layouts and captions.

\*Windows only

## TRUE-TO-LIFE PHOTOS THAT LAST A LIFETIME



A beautiful photograph is something worth keeping forever. Now with ChromaLife 100, the photos you print at home will maintain all their vibrancy and colour for 100 years.<sup>4</sup>

The combination of genuine Canon ChromaLife 100 ink and selected Canon photo papers lets you print long-lasting photos of unrivalled quality.

Thanks to ChromaLife 100, the precious memories in your albums will still be bright and fresh a century from now.



ChromaLife 100 Ink



Canon Photo Papers



Want to know more? Visit [canon.com.au](http://canon.com.au)

## PIXMA iP1600 AND PIXMA iP2200 SPECIFICATIONS

### PRINTER FUNCTIONS

Specifications in blue apply to iP2200 only

#### Paper Feeding Printing Method

Automatic feed  
Bubble Jet ink-on-demand with FINE (Full-photolithography Inkjet Nozzle Engineering) technology

#### Printing Speed<sup>2</sup> iP1600

Monochrome: approx. 19 ppm<sup>†</sup>  
Colour graphics: approx. 16 ppm<sup>††</sup>  
Photo Paper Plus Glossy (6" x 4" image on PP-101 in standard mode): approx. 70 secs borderless<sup>†††</sup>

#### Printing Speed<sup>2</sup> iP2200

Monochrome: approx. 22 ppm<sup>†</sup>  
Colour graphics: approx. 17 ppm<sup>††</sup>  
Photo Paper Plus Glossy (6" x 4" image on PP-101 in standard mode): approx. 55 secs borderless<sup>†††</sup>

#### Maximum Printing Resolution<sup>1</sup> Borderless Printing Ink Cartridges

4800 x 1200 dpi  
5" x 7", 6" x 4", A4, Credit Card size (54mm x 86mm)  
CL-41 – FINE Colour Cartridge  
(or optional High Yield CL-51 Cartridge)  
PG-40 – FINE Black Cartridge  
(or optional High Yield PG-50 Cartridge)  
CL-41 – 100 borderless 6" x 4" photos  
CL-51 – 180 borderless 6" x 4" photos

#### Ink Yield<sup>\*</sup>

**Approx. Paper Handling**  
Plain Paper (10mm): 100 sheets; Super White Paper (SW-201): 75 sheets; High Resolution Paper (HR-101N): 80 sheets; Photo Paper Pro (PR-101): A4: 10 sheets, 6" x 4": 20 sheets; Photo Paper Plus Glossy (PP-101): A4 / 5" x 7": 10 sheets, 6" x 4": 20 sheets; Photo Paper Plus Semi-gloss (SG-101): A4: 10 sheets, 6" x 4": 20 sheets; Glossy Photo Paper (GP-401): A4: 10 sheets, 6" x 4" / Credit Card: 20 sheets; Glossy Photo Paper (everyday use) (GP-501): A4: 10 sheets, 6" x 4": 20 sheets; Matte Photo Paper (MP-101): A4: 10 sheets, 6" x 4": 20 sheets; Photo Paper Plus Double Sided (PP-101D): A4 / 5" x 7": 1 sheet (manual feed); Photo Stickers (PS-101): 1 sheet; Envelopes (DL, Com#10): 10; Transparencies (CF-102): 30 sheets; T-Shirt Transfers (TR-301): 1 sheet

\* Ink yield calculation is based on printing Canon 24 standard digital images on Photo Paper Plus Glossy (6" x 4" borderless print) with default settings in Windows XP driver. The figure above is an average value, measured when printing continuously using the ink immediately after it is unsealed, until the ink is out. Ink yield may vary depending on photos printed, applications software used, print mode and type of paper used. This should be used as a guide only and does not take into account ink that might be used for head cleaning or head refreshing to maintain printer performance. Please visit our website for further details.

- Ink droplets can be placed with a pitch of 1/4800 inch at minimum.
- Print speed dependent on system configuration, image/document complexity, type of paper used, software, print mode and does not take into account data processing time on host computer.
- Easy WebPrint requires Microsoft® Internet Explorer version 5.5, version 6.0 recommended.
- Up to 100 Years' Life in a Photo Album when printed with ChromaLife 100 ink on selected Canon photo papers. Kept in a photo album, shut out light and air (gas), temperature 23 degrees and 50% humidity. Predicted value from the accelerated test. Results may vary based on individual environmental factors. For more information, please visit [canon.com.au/ChromaLife100](http://canon.com.au/ChromaLife100)

All specifications may change without notice.

**Canon Australia Pty. Ltd.**  
Freecall: 1800 021 167  
Facsimile No: + 61 2 9805 2632

**Canon New Zealand Limited**  
Freecall: 0800 222 666  
Facsimile No: + 64 9 489 0380

[canon.com.au](http://canon.com.au)  
[canon.co.nz](http://canon.co.nz)  
[canon.com.au/digitalimage](http://canon.com.au/digitalimage)

Canon is a registered trademark of Canon Inc. and 'advanced simplicity' is a registered trademark of Canon Australia Pty Limited. PIXMA and the PIXMA logo are trademarks of Canon Inc. Microsoft, Windows and the Windows logo are registered trademarks of Microsoft Corporation in the United States and in other countries. All other trademarks are the property of their respective owners.

### Supported Paper Sizes

A4, A5, B5, Letter, Legal, Envelopes (DL, Com#10), 5" x 7", 6" x 4", Credit Card (54mm x 86mm)

### Supported Paper Weights

Plain Paper: 64–105g/m<sup>2</sup>  
Canon specialty paper (max paper weight): approx 273g/m<sup>2</sup> (Photo Paper Plus Double Sided)

### Printable Area

Bordered printing – Top Margin: 3mm, Bottom Margin: 5mm, Left/Right margin: 3.4mm

### Bundled Software

Windows: Easy-PhotoPrint, Easy-WebPrint<sup>3</sup>, PhotoRecord

### Interface

USB port

### Operating System

Windows XP/2000/Me/98  
Mac OS X v 10.2.1 or later

### GENERAL FEATURES

#### Weight

Approx. 2.9kg

#### Power Source

100–240V, 50/60Hz

#### Power Consumption

Max: 10W (printing)

#### Acoustic Noise Level

Standby: 1W  
44dB(A) in best quality mode

#### Operating Environment

Temperature: 5–35°C,  
Humidity: 10–90% RH (no condensation)

#### Storage Environment

Temperature: 0–40°C,  
Humidity: 5–95% RH (no condensation)

#### Dimensions (W x D x H)

**iP1600** – 435 x 249 x 165mm  
**iP2200** – 435 x 253 x 165mm

#### Included in the Box

(minimum dimensions with paper trays and other extensions closed)  
PIXMA iP1600 or iP2200 Bubble Jet printer, Setup Software & User's Guide CD-ROM, Printed Manual, PG-40, CL-41, 12 months warranty card, Power cord, Sample Photo Paper



The one year warranty can be upgraded to 3 years for a minimal cost and is backed by Canon's Customer Care Info-Line support. Driver updates and Technical Support are also available from our websites – [canon.com.au](http://canon.com.au) or [canon.co.nz](http://canon.co.nz)

## PRINT SPEED GUIDES



†  
Black Text  
A4



††  
Text & Colour  
Graphics A4



†††  
Photo  
6" x 4"

**Exif Print**

**FINE**  
Full-photolithography Inkjet  
Nozzle Engineering



**CARTRIDGES 4**  
**PLANET ARK**

